

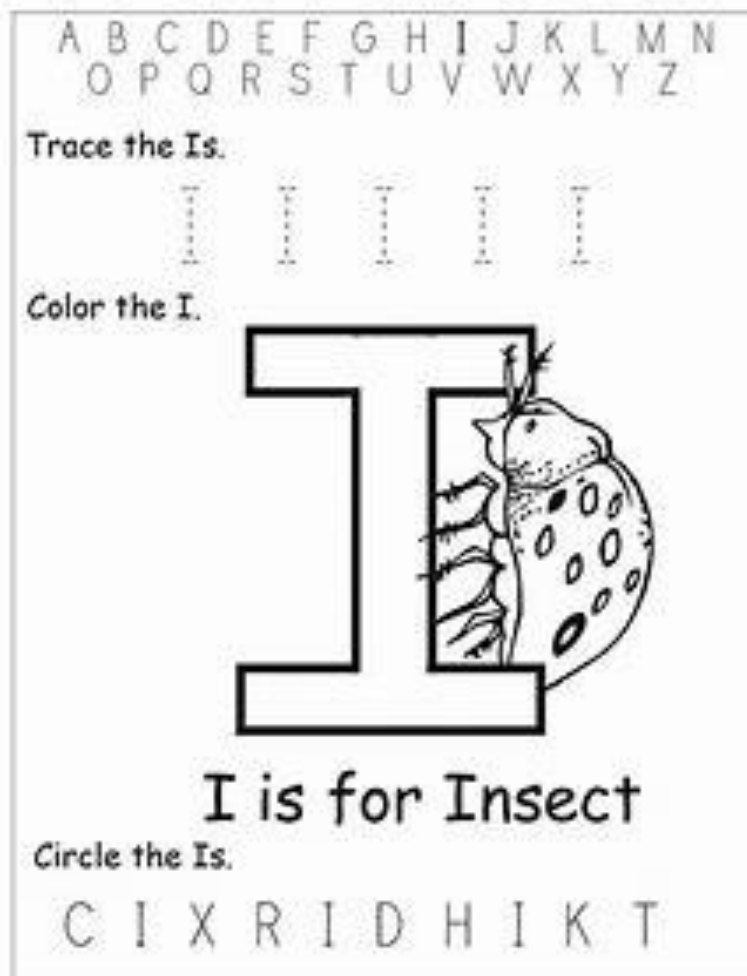
Activity focusing on the letter sounding li

li

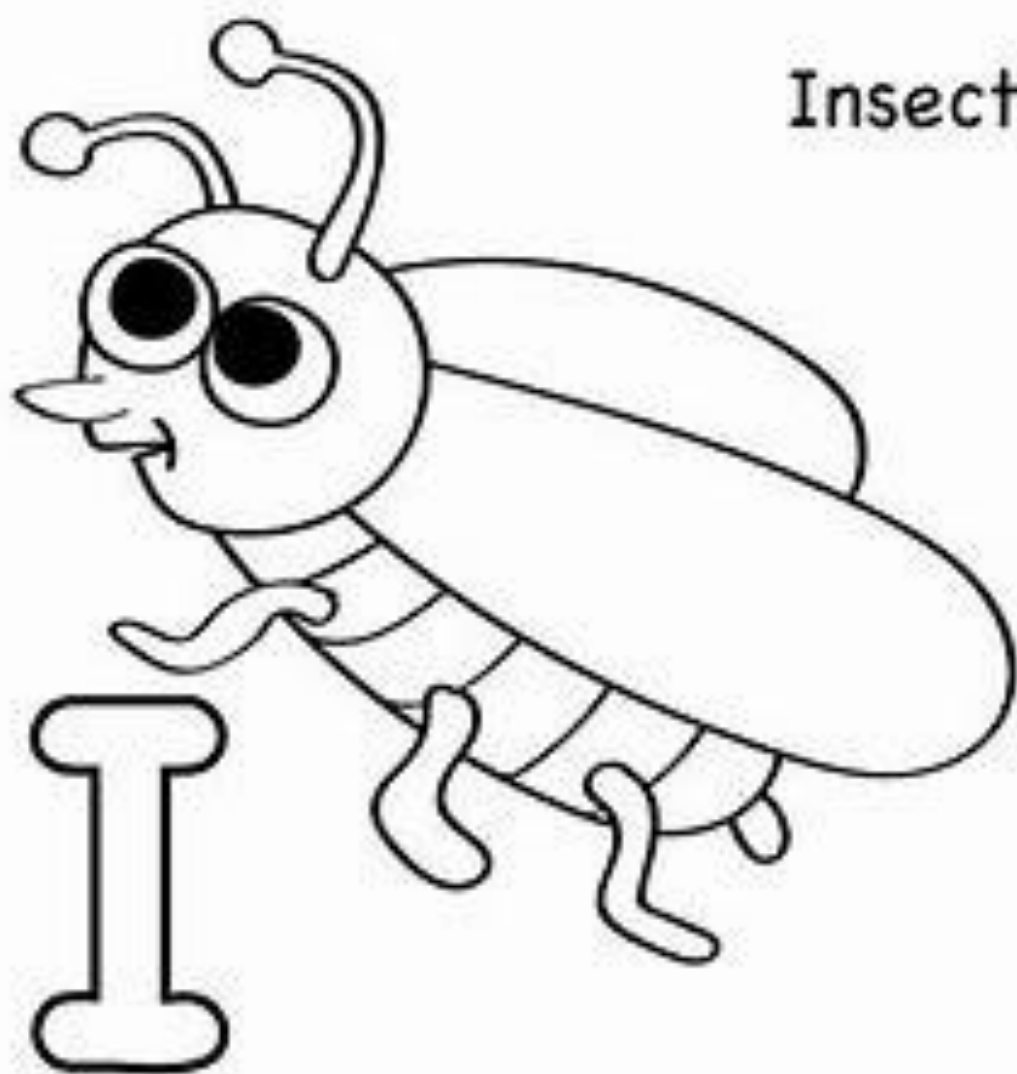
li for **insect** and **ice** (being that its so hot outside at the moment)

It's a great time of year for looking in you garden for insects. We've seen grasshoppers, butterflies, moths and woodlouse in the preschool garden at this time of year.

You could make a pair of binolculars out of toilet rolls and a piece of string and have them look through them for these insects. List them with your child and then encourage them to draw the insects they find later on. Describe the colours, how they move, where they are most likely to be seen and use mathematical language to count them and chart them.



Insect



li for igloo and ice

Make an igloo

You will need a round pot from the recycling box.

Cotton wool and glue

Have lots of frozen ice and ice cubes done to add to their play

Artic animals or print some off and stick them on stones

What to do

Have your child stick lots of cotton wool (or anything white) on a round bowl/box. This has so simply become an igloo.

Place it in a large bowl or tray and add ice around it. If there were enough ice cubes your child may be able to build a real ice igloo too!!

Place the animals in there too.

Happy playing.

Some language you could use: What do you need to cut it with?

What do do think it will feel like?

What animals do you think could like there? What would they eat?

How high shall we build the ice igloo?

